

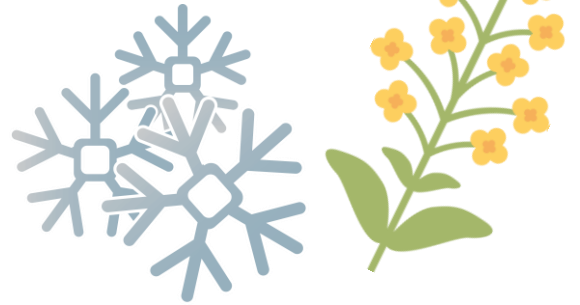
Year 1 & 2 Newsletter

P.E

P.E lessons will take place every **Tuesday and Friday** afternoon. We ask that children arrive at school already dressed in their P.E clothes; shorts/ jogging bottoms / leggings and t-shirt. We aim to do PE outside wherever possible, so please ensure that your child is equipped with appropriate footwear.

Dates for the diary

Tuesday 11th February - Safer Internet Day
Wednesday 12th February - Music for parents
Monday 17th February - Parents evening
Friday 21st February - Break up for half term
Monday 3rd March - Back to school
Thursday 6th March - World Book Day
7th-16th March - British Science Week
Friday 21st March - Red Nose Day
24th - 30th March - Shakespear Week
Fri 11th April Break up for Easter



The Spring Term

Welcome back everyone! We hope you have all enjoyed a relaxing, fun-filled and festive break. It was an absolute pleasure working with your children last term and I can't wait to see what this term has got in store for us!

Keeping in touch

Please don't hesitate to get in touch at any time. Miss Parvin and I are always here to offer advice and support.



Lingdale Primary School

"Working Together To Be
The Best That We Can Be"

Weather

The winter weather has finally arrived! With this in mind, please ensure that your child is equipped with appropriate clothing and footwear. In the event of snow and ice, please ensure that your child brings a spare pair of shoes to school eg wellies or trainers. Without a spare pair of shoes, we cannot allow your child to play outside at play time and dinner time in these conditions. Thank you :)

Homework and reading

We expect to see your child's home reading record in school every day. The children will be entered into the book draw on a Friday if they have read **three times or more** at home.

Little Wandle reading books will be given out on a **Thursday**. These will need to be returned the following **Monday**. Children will receive a story book on Monday to return to school on Thursday.

Children will also receive a practise sheet of spellings each week on a **Friday**. Please encourage them to practise these spellings in preparation for the spelling test the following Friday.

Homework will also be sent out on a **Friday** to be returned by **Wednesday**.

Maths

Year 1

- ✓ Addition and Subtraction within 10
- ✓ Spatial Reasoning and Patterns
- ✓ Place Value within 20

Year 2

- ✓ Addition and Subtraction (using mental and written strategies)
- ✓ Statistics
- ✓ Multiplication

English

In English, the children will continue to be inspired by a range of different texts. They will practise different writing styles, considering the context, purpose and audience of their writing.

Science

In Science, we will be exploring our new topic 'Plants'. We will cover:

Year 1

- ✓ Wild and garden plants
- ✓ Identifying common flowers, plants and trees by sight
- ✓ Evergreen and deciduous trees
- ✓ Parts of a plant including roots, stem, leaves, flower

Year 2

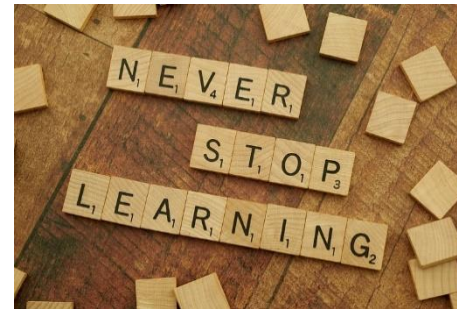
- ✓ Plants are grown from a seed or a bulb
- ✓ Know that plants need water, sunlight, suitable temperature, air and time in order to grow

History

In History, we will be learning about The Great Fire of London. We will learn about when and how the fire started and we will explore what impact the fire has had on our lives today.

Geography

In Geography, the children will be learning about the Polar Regions. We will explore what the climate is like in the North and South Pole and we will compare the climate of these regions to that of the United Kingdom.



DT

In DT, the children will be learning about the safe and hygienic preparation of fruit. They will also have the opportunity to plan and make their own smoothie.

Art

In Art, we will be starting our new topic 'Sculpture and 3D'. During this topic, the children will learn how to create simple 3D shapes and structures using paper and card.

Computing

Throughout this term, we will continue to discuss the importance of online safety. The children will also learn about pictograms and will create their own pictogram to display data.

PSHE

In PSHE, the children will be exploring the topic 'Dreams and Goals'. During this topic, the children will learn about the importance of setting ambitious, yet realistic goals. They will also explore how to effectively overcome any obstacles they may encounter on their journey to achieving their goals.

RE

In RE, we will be exploring why Jesus is special to Christians. In Spring 2, we will explore why Easter is a special time for Christians.

PE

In PE, the children will continue to develop their fundamental skills in gymnastics. They will also complete dance this term.